





Legend:

-  Study Corridor
-  Drain Flow
-  Existing Drainage Crossing
-  Crossing Number

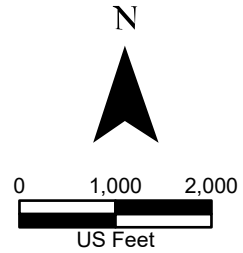
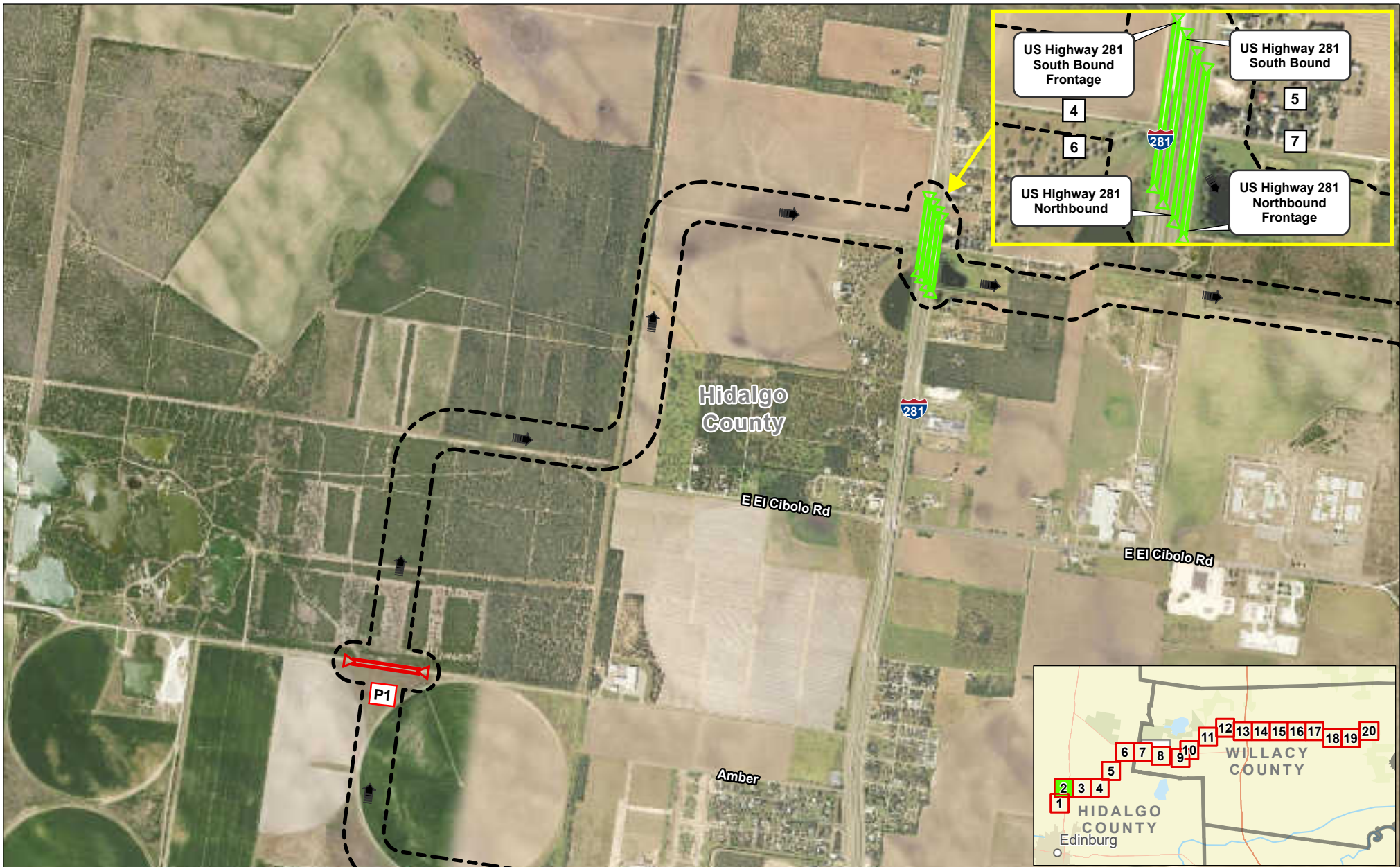




Exhibit 14 Alternative 1 Existing and Proposed Crossings Sheet 1 of 20 Raymondville Drain Project

Author : Joel F. Aguirre Updated : 10/17/2023

DISCLAIMER: RRP Consulting Engineers makes no guarantees as to the accuracy of data used in the construction of this map.



Legend:

-  Study Corridor
-  Drain Flow
-  Existing Drainage Crossing
-  Proposed Drainage Crossing
-  Crossing Number

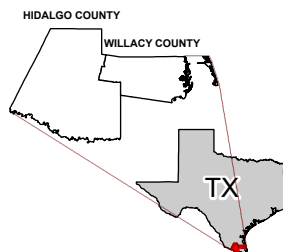
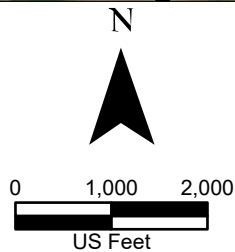
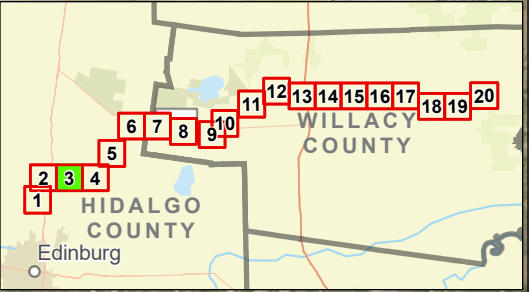
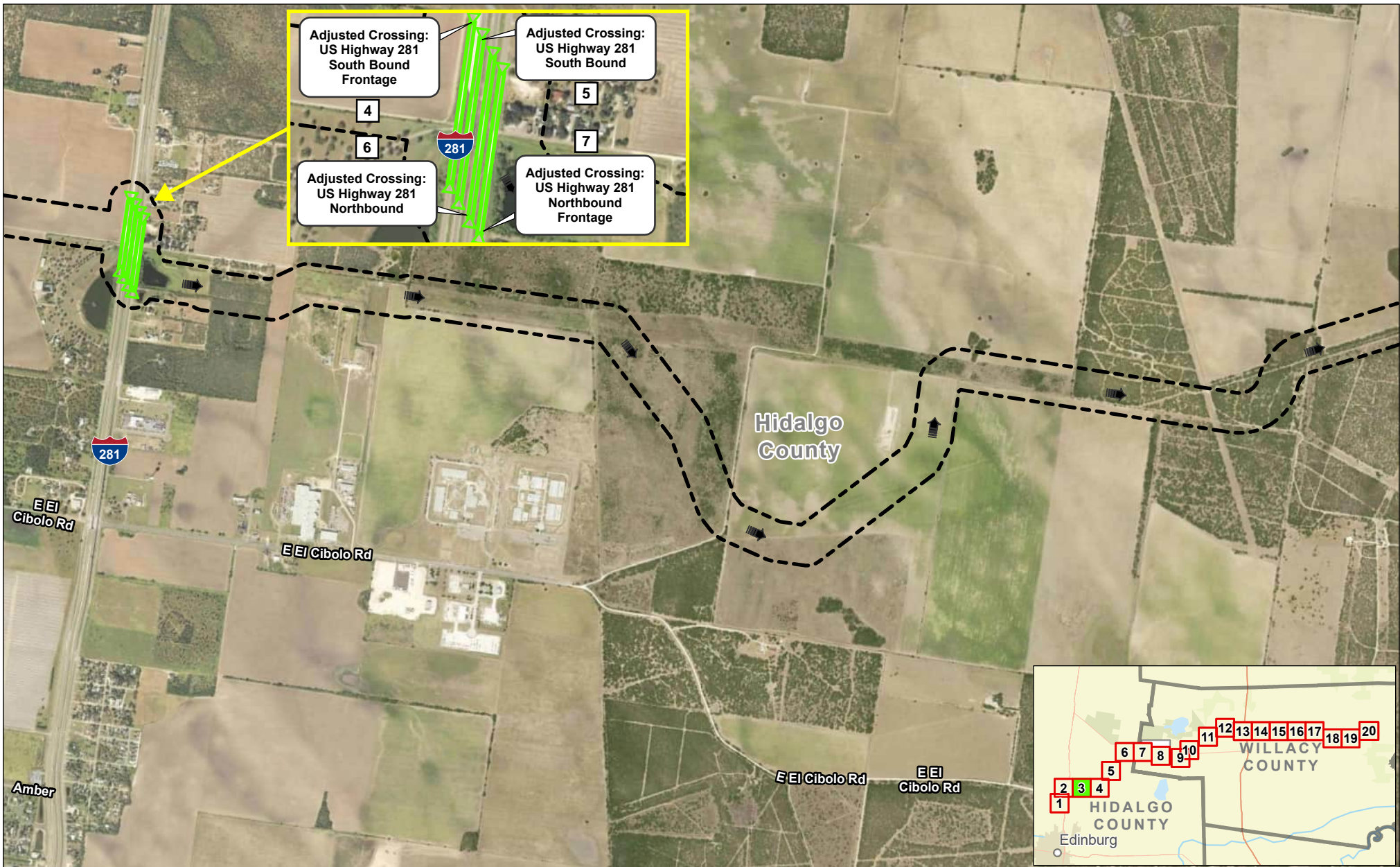


Exhibit 14
Alternative 1 Existing
and Proposed Crossings
Sheet 2 of 20
Raymondville Drain Project

Author : Joel F. Aguirre Updated : 1/2/2024

DISCLAIMER: RRP Consulting Engineers makes no guarantees as to the accuracy of 3rd party data used in the construction of this map.



Legend:

- Study Corridor
- Drain Flow
- Existing Drainage Crossing
- Crossing Number

N

0 1,000 2,000

US Feet

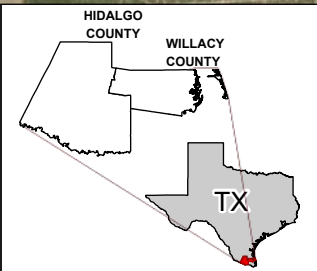
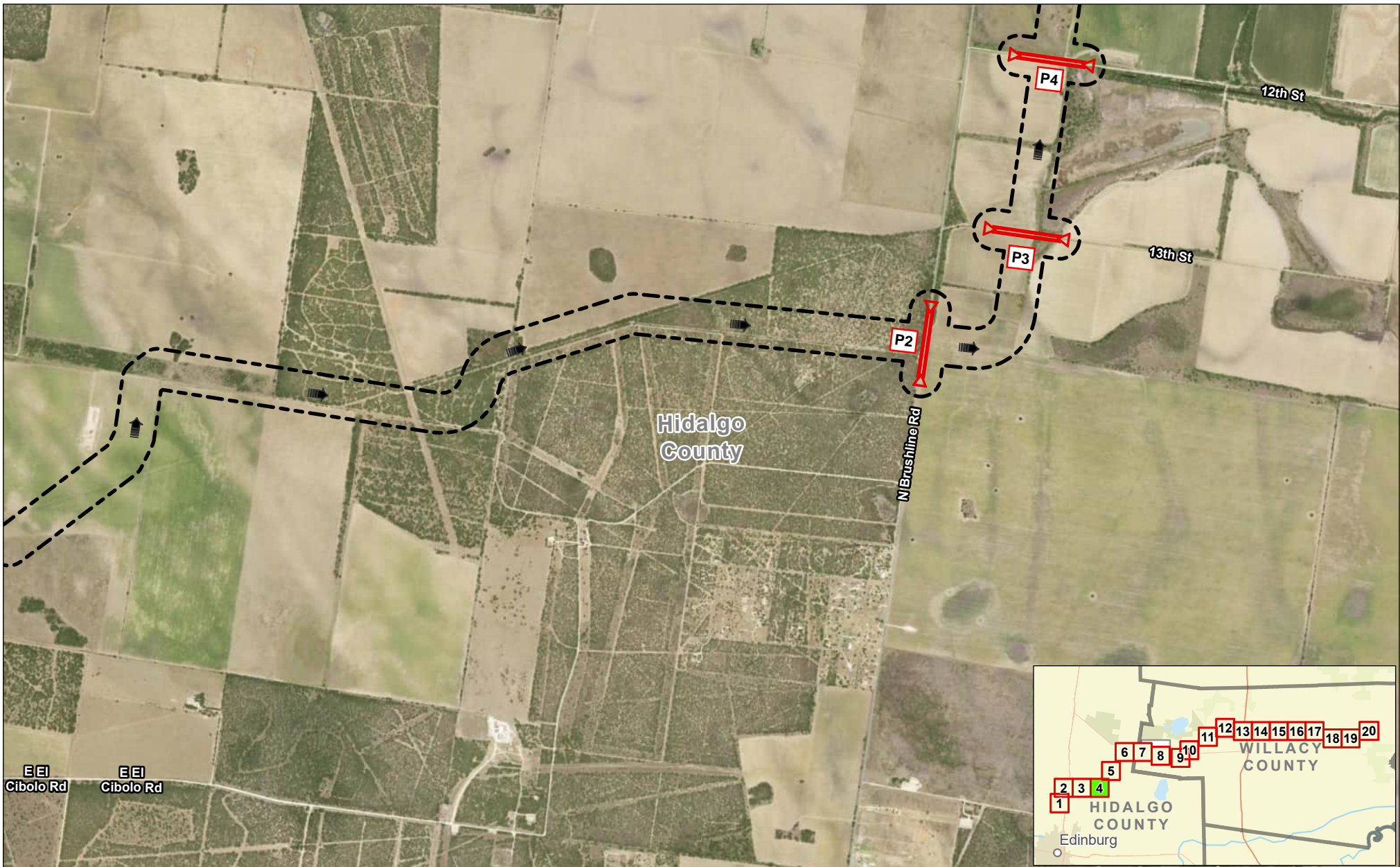


Exhibit 14 Alternative 1 Existing and Proposed Crossings Sheet 3 of 20 Raymondville Drain Project

Author : Joel F. Aguirre Updated : 10/17/2023

DISCLAIMER: RRP Consulting Engineers makes no guarantees as to the accuracy of data used in the construction of this map.

Path: S:\project\4408000_ProposedRaymondvilleDrain\Drawings\Drawings.dwg



Legend:

- Study Corridor
- Drain Flow
- Crossing Number
- Proposed Drainage Crossing

N

0 1,000 2,000

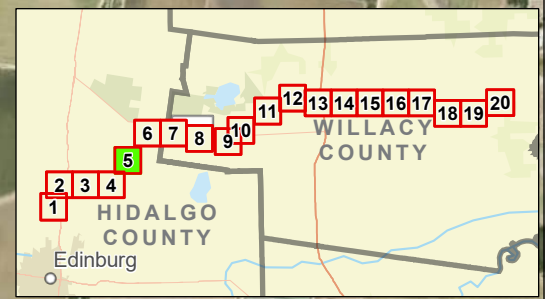
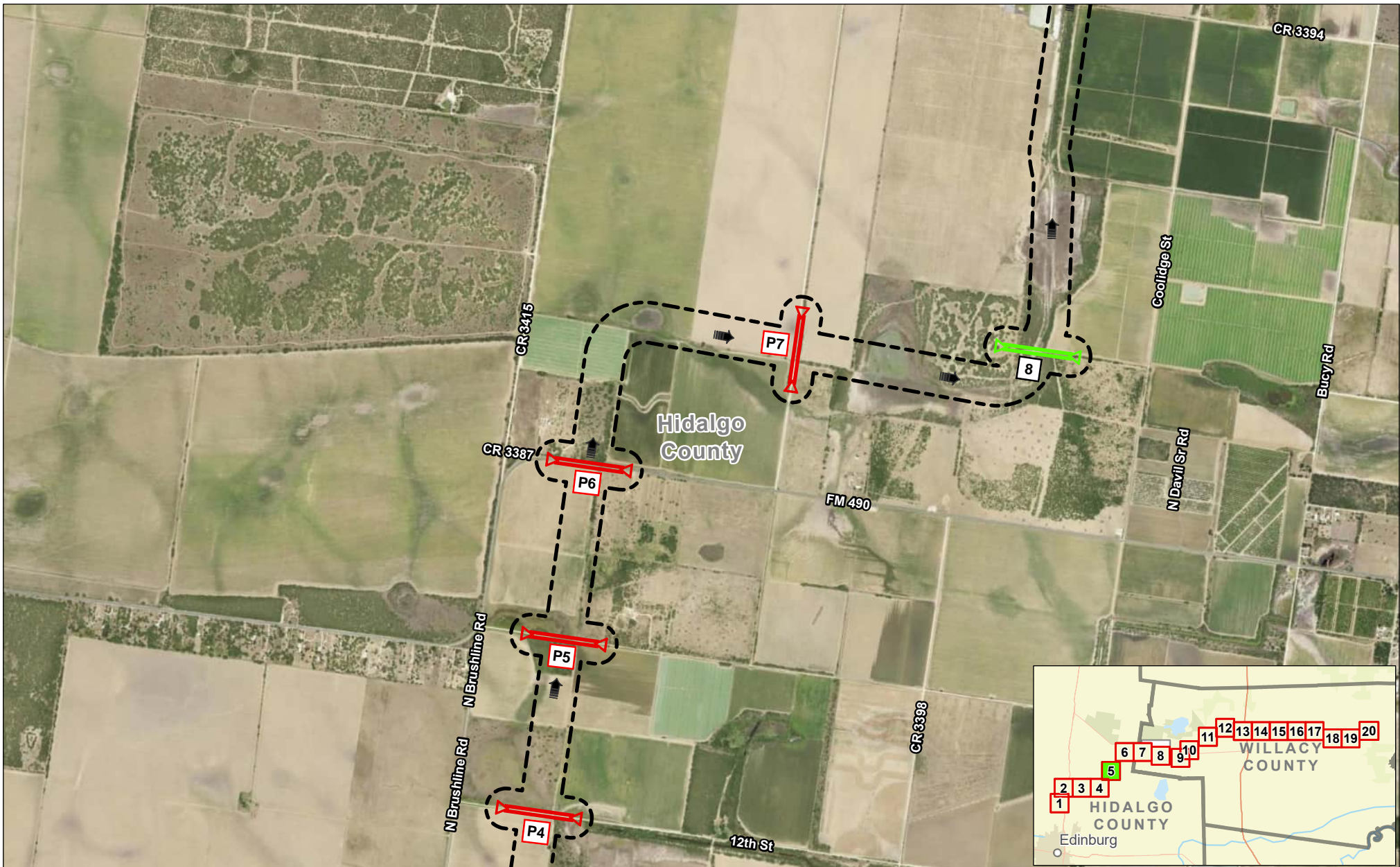
US Feet

HIDALGO COUNTY
WILLACY COUNTY
TX

Exhibit 14 Alternative 1 Existing and Proposed Crossings Sheet 4 of 20 Raymondville Drain Project

Author : Joel F. Aguirre	Updated : 10/18/2023
DISCLAIMER: RRP Consulting Engineers makes no guarantees as to the accuracy of data used in the construction of this map.	

Path: S:\project\4408000_ProjectRepository\GIS\PDF_Books\Exh_Sheet_4.apx



Legend:

- Study Corridor
- Drain Flow
- Existing Drainage Crossing
- Proposed Drainage Crossing
- Crossing Number

N

0 1,000 2,000

US Feet

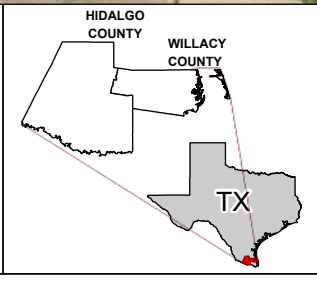
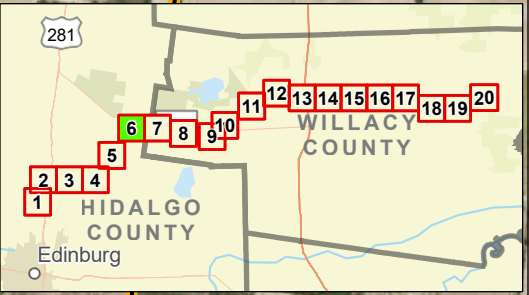
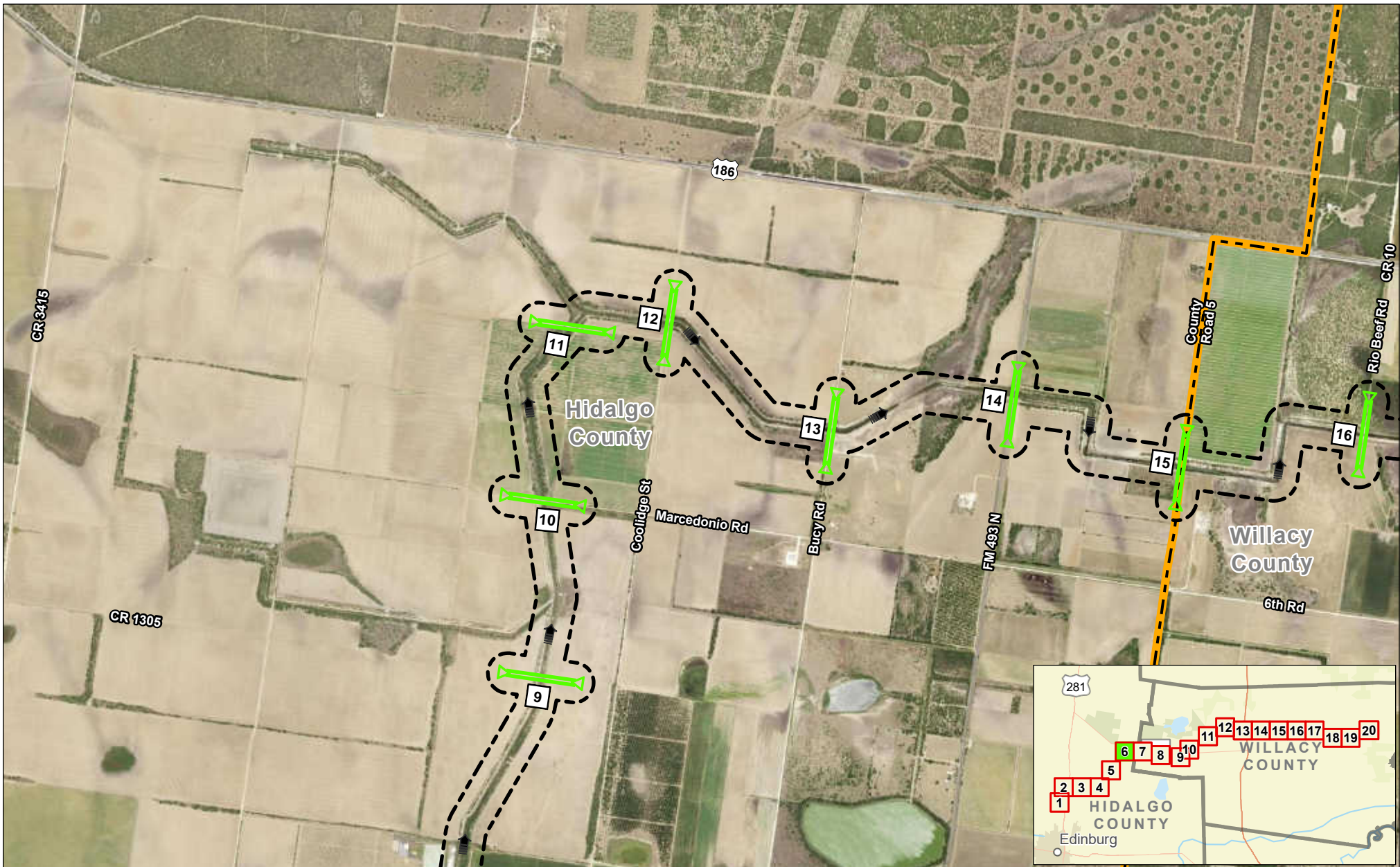


Exhibit 14 Alternative 1 Existing and Proposed Crossings Sheet 5 of 20 Raymondville Drain Project

Author : Joel F. Aguirre Updated : 10/18/2023

DISCLAIMER: RRP Consulting Engineers makes no guarantees as to the accuracy of data used in the construction of this map.

Path: S:\project\4408000_ProjectRepository\GIS\PDF_Books\Exh_Sheet_5.apx



Legend:

- Study Corridor
- Drain Flow
- Existing Drainage Crossing
- County Boundary
- Crossing Number

N

0 1,000 2,000

US Feet

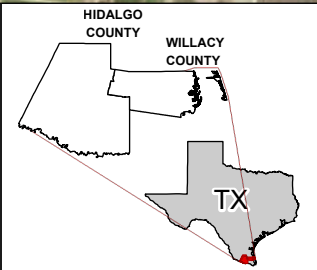
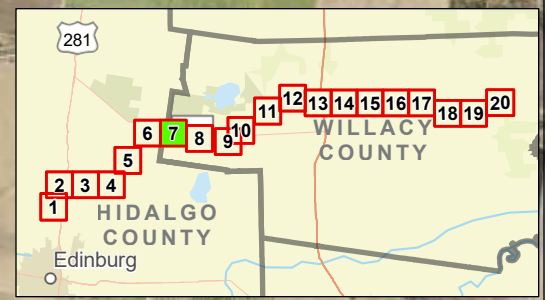
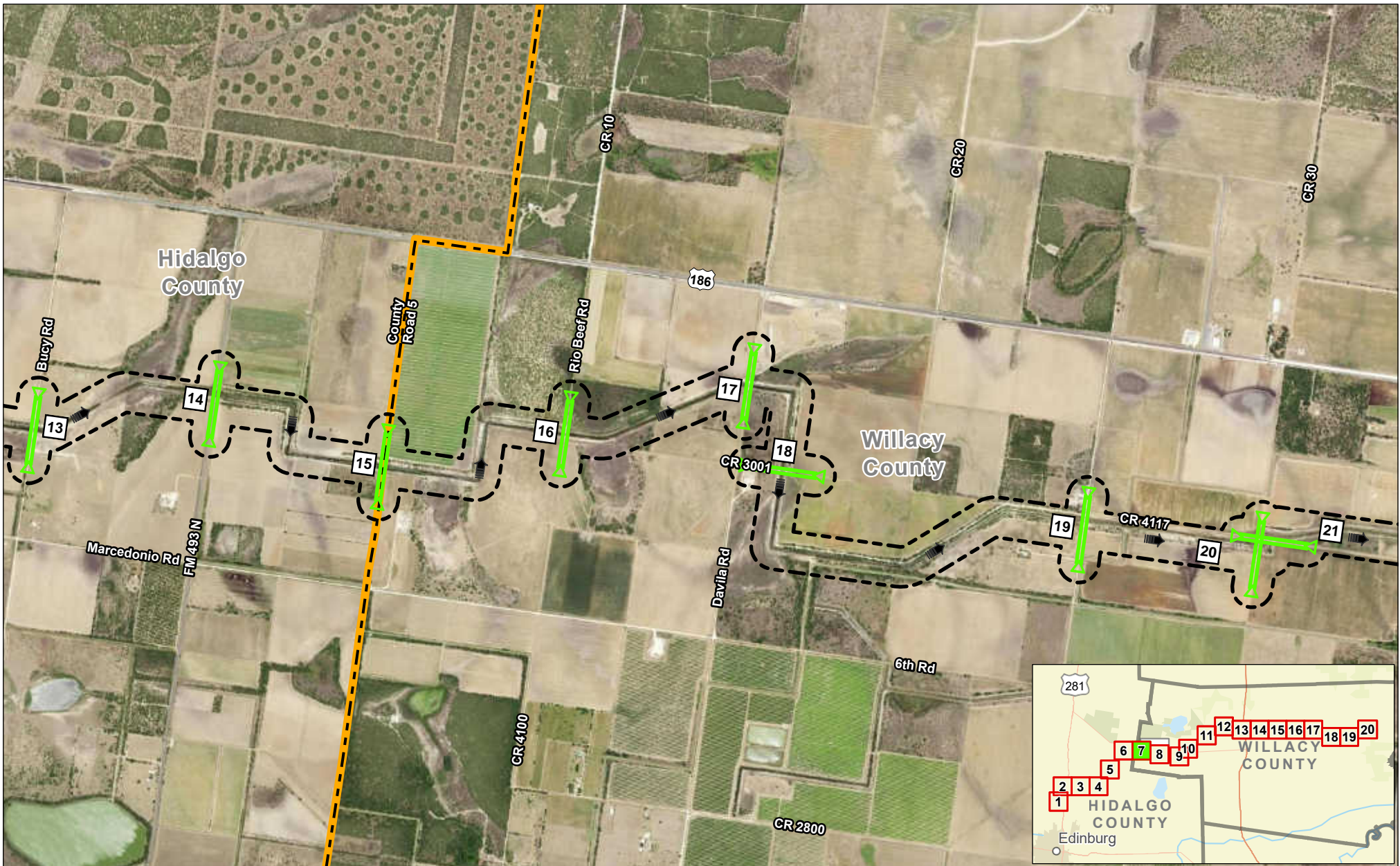


Exhibit 14 Alternative 1 Existing and Proposed Crossings Sheet 6 of 20 Raymondville Drain Project

Author : Joel F. Aguirre Updated : 12/14/2023

DISCLAIMER: RRP Consulting Engineers makes no guarantees as to the accuracy of data used in the construction of this map.

Path: S:\project\440800_ProposedRaymondvilleDrain\Drawings\Sheet_06.dwg



Legend:

- Study Corridor
- Drain Flow
- Existing Drainage Crossing
- County Boundary
- Crossing Number

N

0 1,000 2,000

US Feet

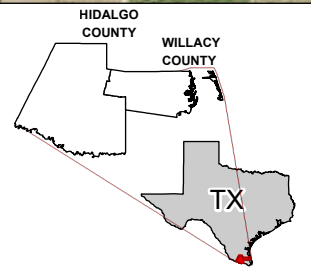
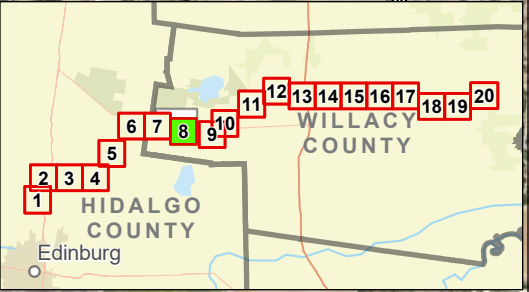
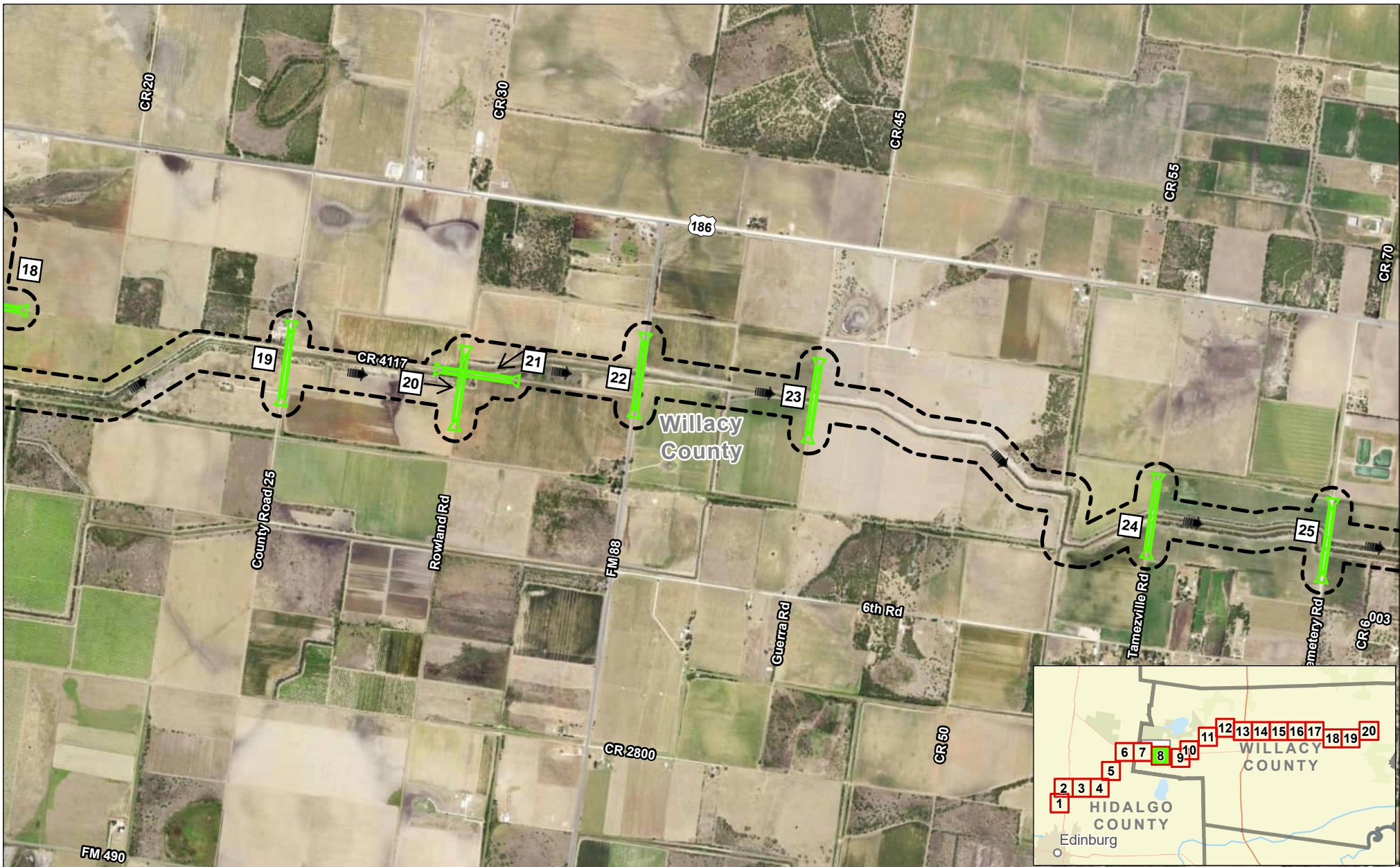


Exhibit 14 Alternative 1 Existing and Proposed Crossings Sheet 7 of 20 Raymondville Drain Project

Author : Joel F. Aguirre Updated : 12/14/2023

DISCLAIMER: RRP Consulting Engineers makes no guarantees as to the accuracy of data used in the construction of this map.



Legend:

- Study Corridor
- Drain Flow
- Existing Drainage Crossing
- Crossing Number

N

0 1,000 2,000

US Feet

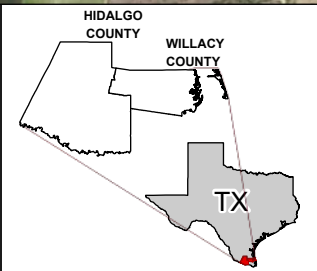
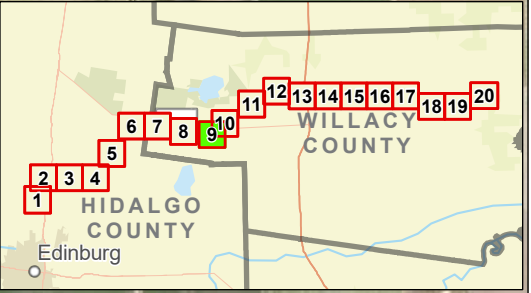
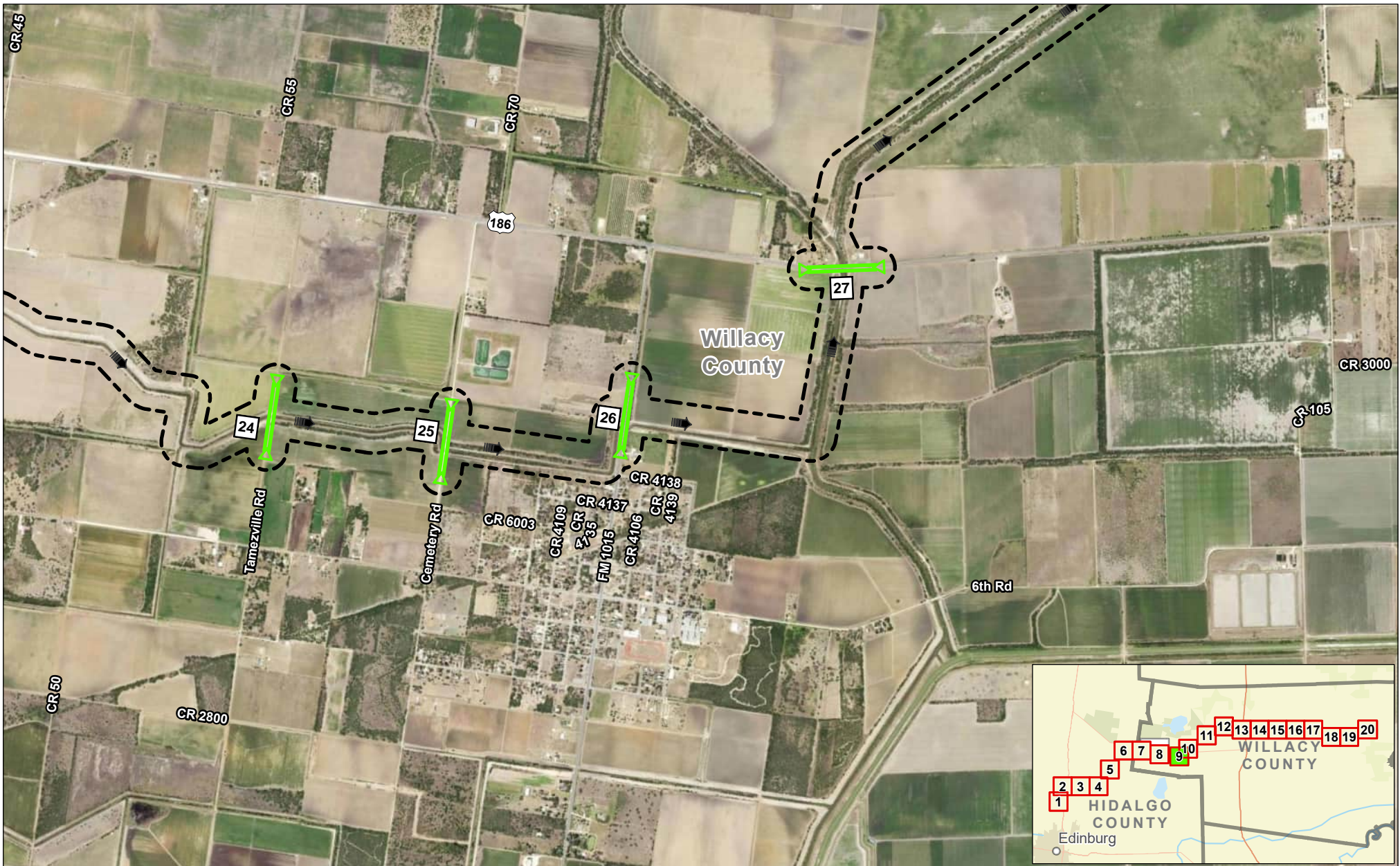


Exhibit 14 Alternative 1 Existing and Proposed Crossings Sheet 8 of 20 Raymondville Drain Project

Author : Joel F. Aguirre Updated : 10/17/2023

DISCLAIMER: RRP Consulting Engineers makes no guarantees as to the accuracy of data used in the construction of this map.

Path: S:\project\4408000_ProposedRaymondvilleDrain\Drawings\Drawings\Sheet_08.dwg



Legend:

- Study Corridor
- Drain Flow
- Existing Drainage Crossing
- Crossing Number

N

0 1,000 2,000

US Feet

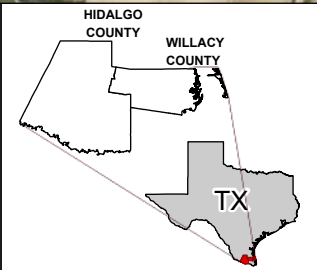
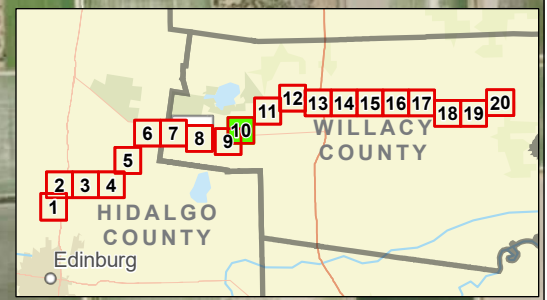


Exhibit 14 Alternative 1 Existing and Proposed Crossings Sheet 9 of 20 Raymondville Drain Project

Author : Joel F. Aguirre Updated : 10/17/2023

DISCLAIMER: RRP Consulting Engineers makes no guarantees as to the accuracy of data used in the construction of this map.

Path: S:\project\340800_ProposedRaymondvilleDrain\Drawings\Drawings.dwg



- Legend:**
- Study Corridor
 - Drain Flow
 - Existing Drainage Crossing
 - Crossing Number

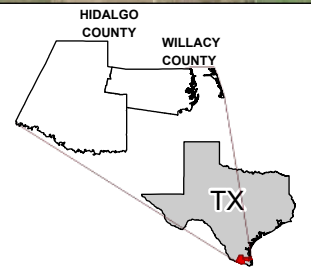
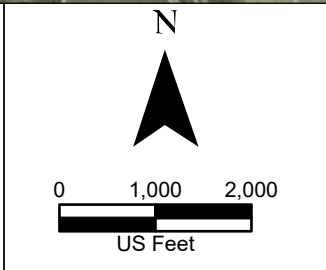
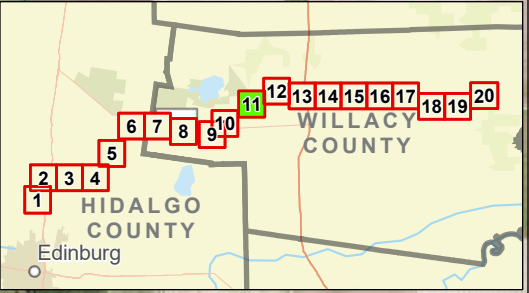
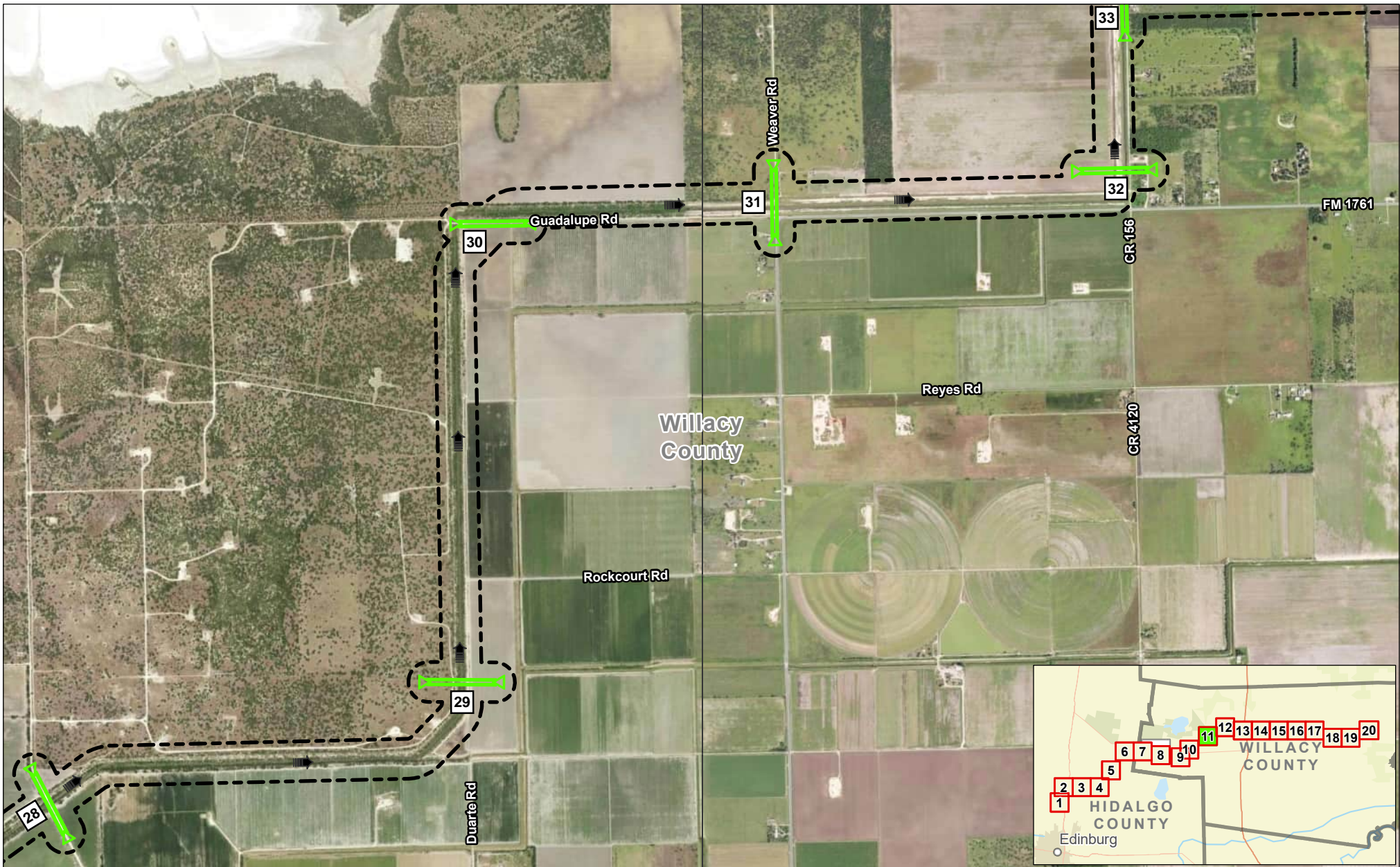


Exhibit 14 Alternative 1 Existing and Proposed Crossings Sheet 10 of 20 Raymondville Drain Project

Author : Joel F. Aguirre Updated : 10/17/2023

DISCLAIMER: RRP Consulting Engineers makes no guarantees as to the accuracy of data used in the construction of this map.



Legend:

- Study Corridor
- Drain Flow
- Existing Drainage Crossing
- Crossing Number

N

0 1,000 2,000

US Feet

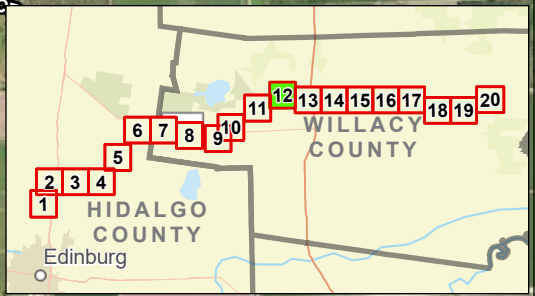
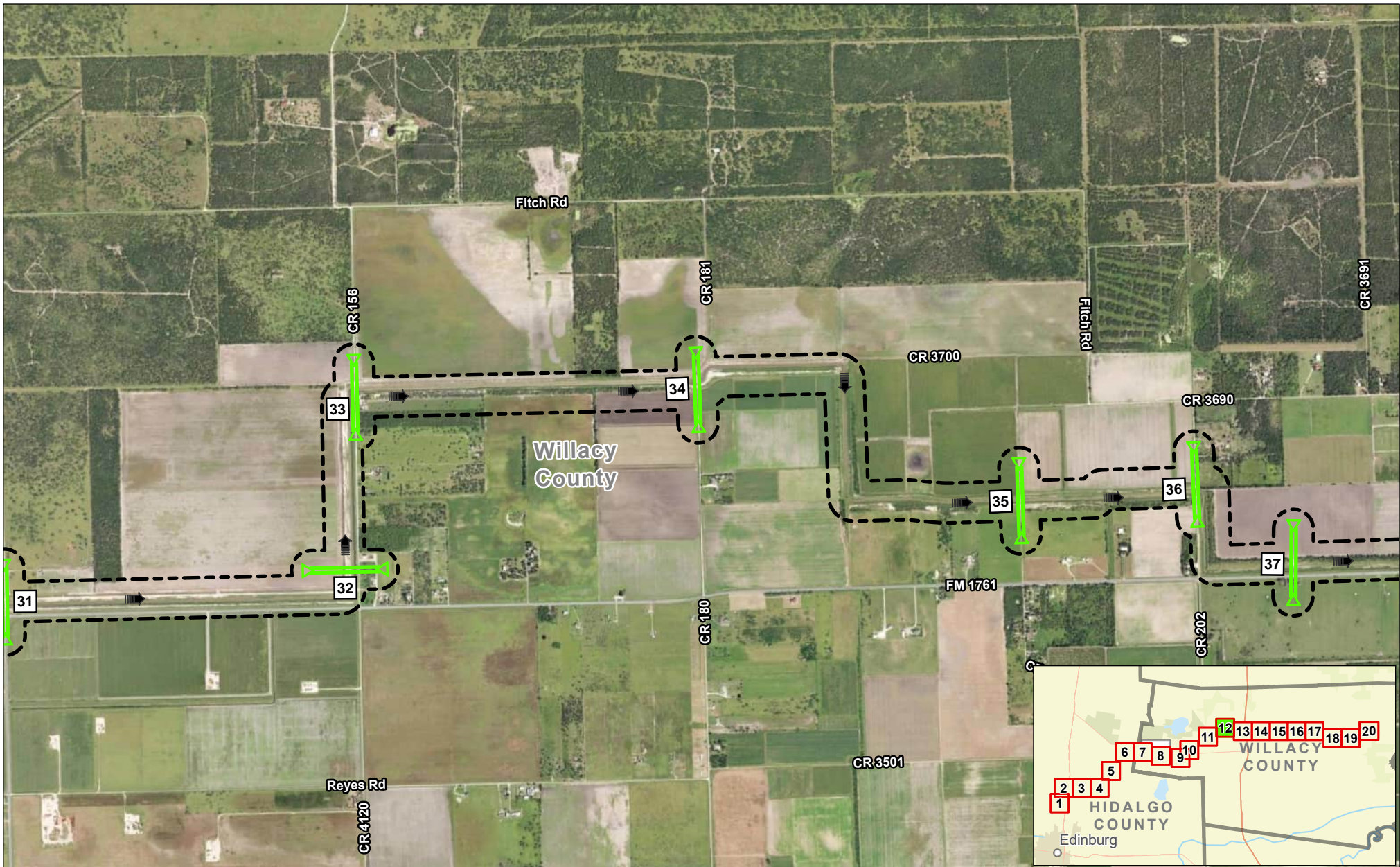
HIDALGO COUNTY
WILLACY COUNTY

TX





Exhibit 14 Alternative 1 Existing and Proposed Crossings Sheet 11 of 20 Raymondville Drain Project

Author : Joel F. Aguirre Updated : 10/17/2023

DISCLAIMER: RRP Consulting Engineers makes no guarantees as to the accuracy of data used in the construction of this map.



Legend:

-  Study Corridor
-  Drain Flow
-  Existing Drainage Crossing
-  Crossing Number

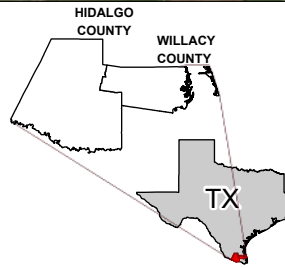
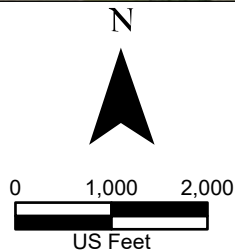
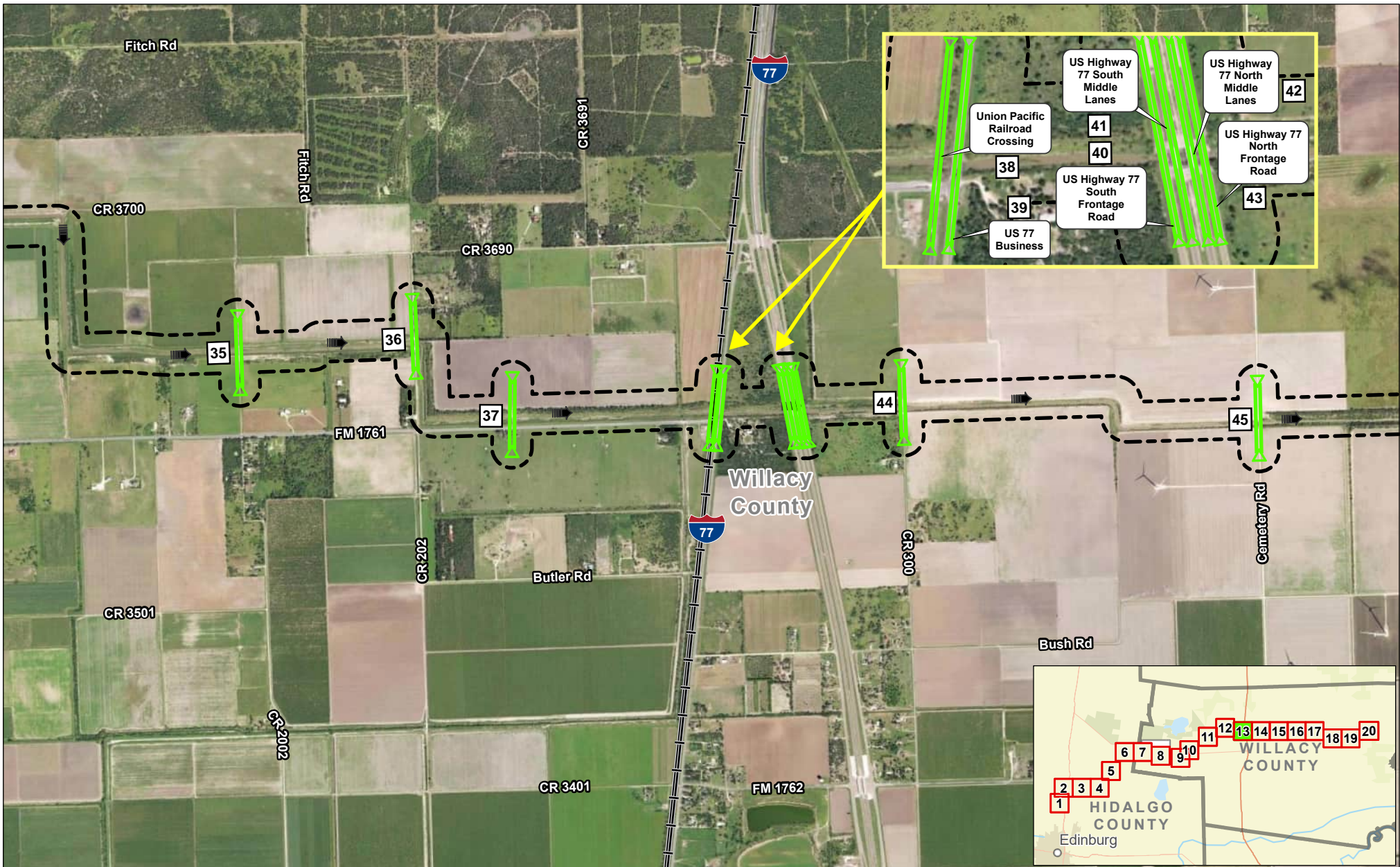


Exhibit 14 Alternative 1 Existing and Proposed Crossings Sheet 12 of 20 Raymondville Drain Project

Author : Joel F. Aguirre Updated : 10/17/2023
 DISCLAIMER: RRP Consulting Engineers makes no guarantees as to the accuracy of data used in the construction of this map.



- Legend:**
- Study Corridor
 - Drain Flow
 - Rail Road
 - Existing Drainage Crossing
 - Crossing Number

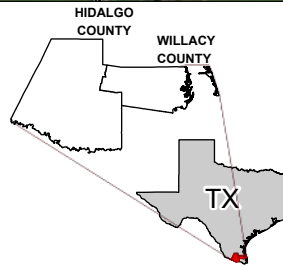
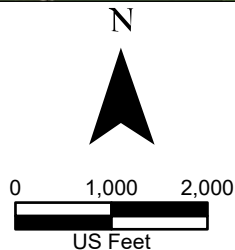
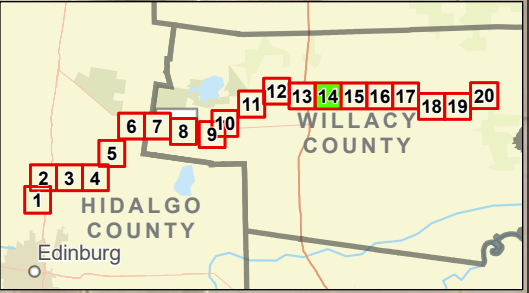


Exhibit 14 Alternative 1 Existing and Proposed Crossings Sheet 13 of 20 Raymondville Drain Project

Author : Joel F. Aguirre Updated : 10/17/2023

DISCLAIMER: RRP Consulting Engineers makes no guarantees as to the accuracy of data used in the construction of this map.



Legend:

- Study Corridor
- Drain Flow
- Existing Drainage Crossing
- Crossing Number

N

0 1,000 2,000

US Feet

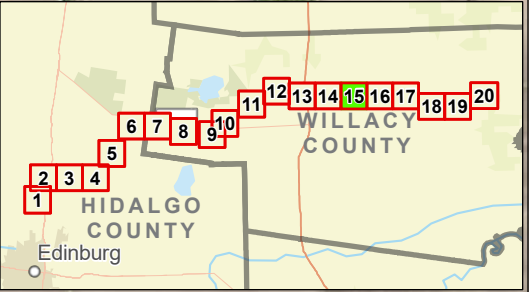
HIDALGO COUNTY
WILLACY COUNTY

TX

Exhibit 14 Alternative 1 Existing and Proposed Crossings Sheet 14 of 20 Raymondville Drain Project

Author : Joel F. Aguirre	Updated : 10/17/2023
<i>DISCLAIMER: RRP Consulting Engineers makes no guarantees as to the accuracy of data used in the construction of this map.</i>	

Path: S:\project\4408000_ProjectInventory\GIS\PDF_Books\Exh_Series.aprx



Legend:

- Study Corridor
- Drain Flow
- Existing Drainage Crossing
- Crossing Number

N

0 1,000 2,000

US Feet

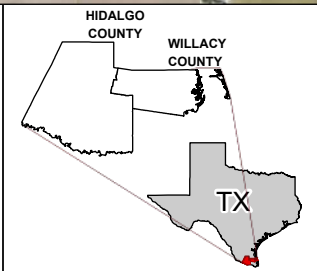


Exhibit 14 Alternative 1 Existing and Proposed Crossings Sheet 15 of 20 Raymondville Drain Project





Author : Joel F. Aguirre	Updated : 10/17/2023
--------------------------	----------------------

DISCLAIMER: RRP Consulting Engineers makes no guarantees as to the accuracy of data used in the construction of this map.

Path: S:\project\4408000_Project\Raymondville\GIS\PDF_Export\Exh_15_Series.aprx



Legend:

-  Study Corridor
-  Drain Flow
-  Existing Drainage Crossing
-  Crossing Number

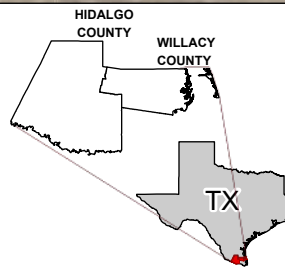
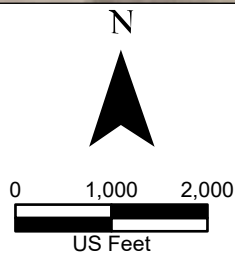
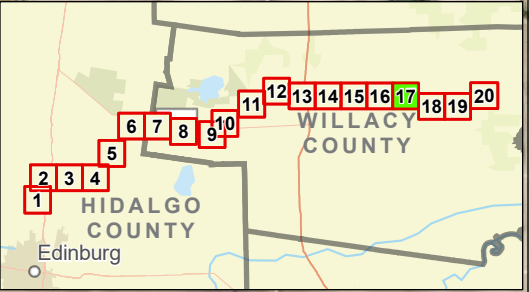


Exhibit 14
Alternative 1 Existing
and Proposed Crossings
Sheet 16 of 20
Raymondville Drain Project

Author : Joel F. Aguirre Updated : 10/17/2023
 DISCLAIMER: RRP Consulting Engineers makes no guarantees as to the accuracy of data used in the construction of this map.



Legend:

- Study Corridor
- Drain Flow
- Existing Drainage Crossing
- Crossing Number

N

0 1,000 2,000

US Feet

HIDALGO COUNTY
WILLACY COUNTY

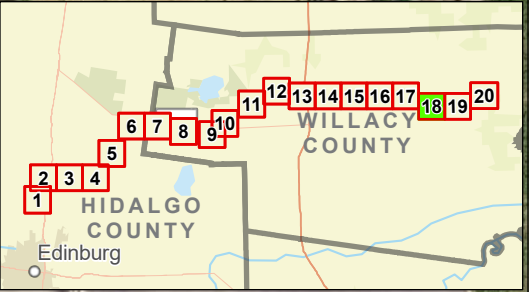
TX

Exhibit 14 Alternative 1 Existing and Proposed Crossings Sheet 17 of 20 Raymondville Drain Project

Author : Joel F. Aguirre Updated : 10/17/2023

DISCLAIMER: RRP Consulting Engineers makes no guarantees as to the accuracy of data used in the construction of this map.

Path: S:\project\4108000_Project\Raymondville\GIS\PDF_Export\Exh-17_Series.aprx



Legend:

- Study Corridor
- Drain Flow
- Existing Drainage Crossing
- Crossing Number

N

0 1,000 2,000

US Feet

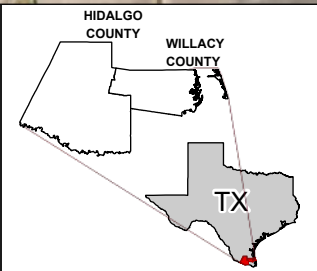


Exhibit 14 Alternative 1 Existing and Proposed Crossings Sheet 18 of 20 Raymondville Drain Project




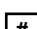
Author : Joel F. Aguirre Updated : 10/17/2023

DISCLAIMER: RRP Consulting Engineers makes no guarantees as to the accuracy of data used in the construction of this map.

Path: S:\project\4108000_ProjectInventory\GIS\FOP_Encls-Encl_Series.aprx



Legend:

-  Study Corridor
-  Drain Flow
-  Existing Drainage Crossing
-  Crossing Number

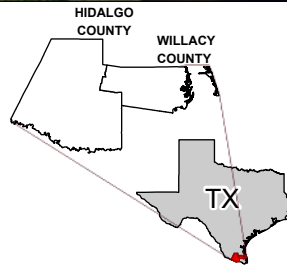
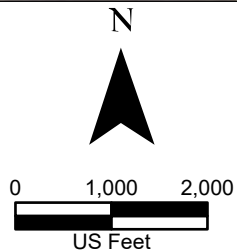
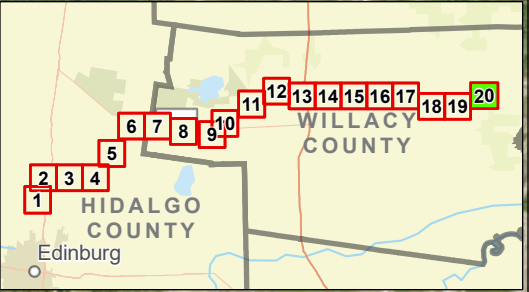






Exhibit 14
Alternative 1 Existing
and Proposed Crossings
Sheet 19 of 20
Raymondville Drain Project


Author : Joel F. Aguirre Updated : 10/17/2023
 DISCLAIMER: RRP Consulting Engineers makes no guarantees as to the accuracy of data used in the construction of this map.



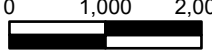
Legend:

-  Study Corridor
-  Drain Flow
-  Existing Drainage Crossing
-  Crossing Number

N



0 1,000 2,000



US Feet

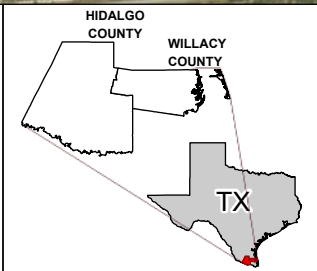




Exhibit 14 Alternative 1 Existing and Proposed Crossings Sheet 20 of 20 Raymondville Drain Project

Author : Joel F. Aguirre	Updated : 10/17/2023
<i>DISCLAIMER: RRP Consulting Engineers makes no guarantees as to the accuracy of data used in the construction of this map.</i>	

Path: S:\project\4408000_ProjectInventory\GIS\FOP_Encls-End_Series.aprx